

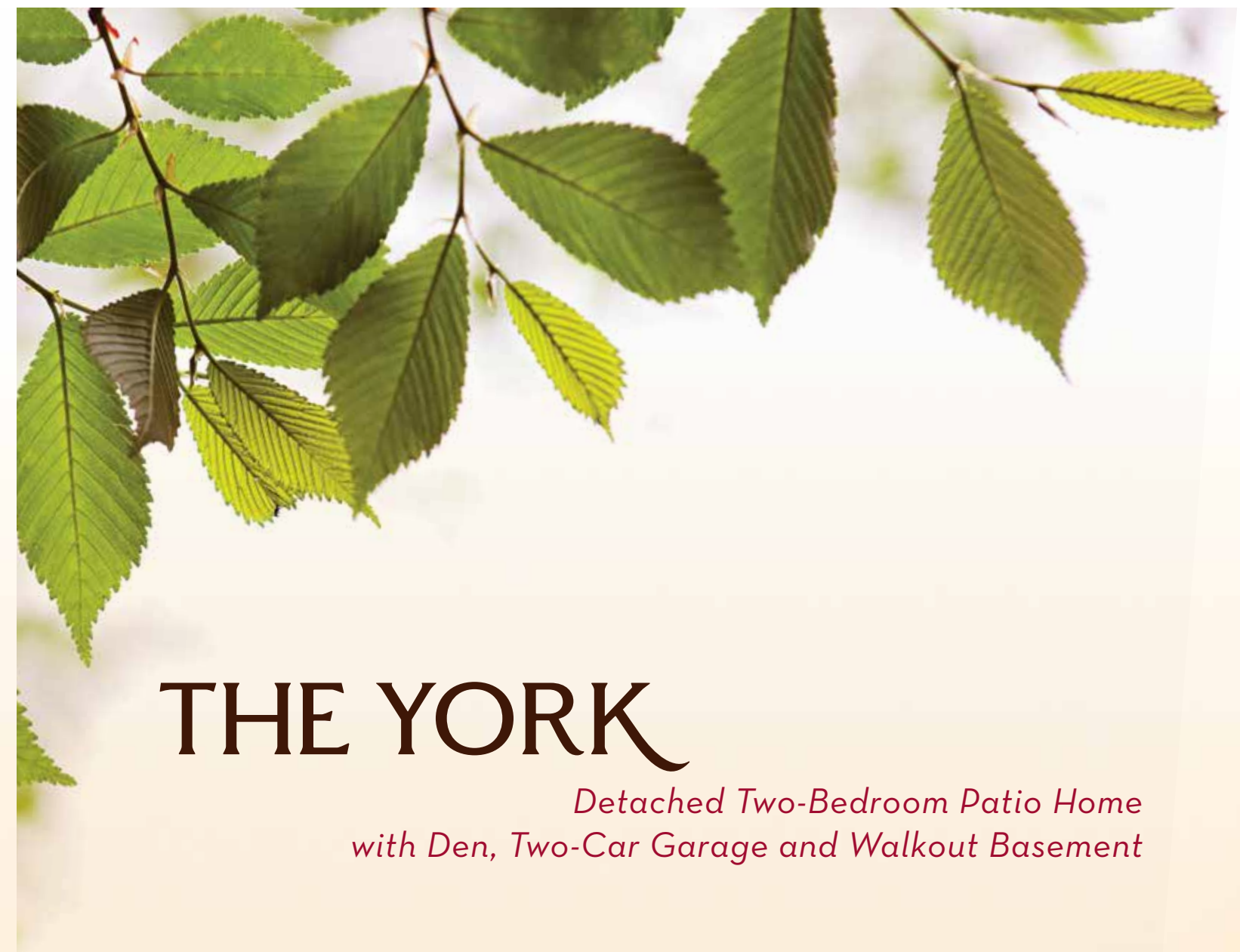
THE YORK

*Detached Two-Bedroom Patio Home
with Den, Two-Car Garage and Walkout Basement*

Features:

- Two bedrooms
- Two baths
- Den
- Spacious rooms with high ceilings
- Wall-to-wall carpeting
- Walk-in closet
- Bright, eat-in kitchen with bay window
- Full-size oven and range
- Frost-free refrigerator/ice maker
- Garbage disposal
- Microwave
- Dishwasher
- Washer and dryer
- Individually controlled heating and air conditioning
- 24-hour personal emergency response system and security services
- Pre-wired for telephone, cable television and personal computer
- Attached two-car garage with storage
- Covered entry
- Backyard deck
- Storage area
- Walkout basement

ONE SINCLAIR DRIVE • PITTSFORD, NY 14534 P 585-248-1100 cloverwood.org
A FRIENDLY SENIOR LIVING COMMUNITY

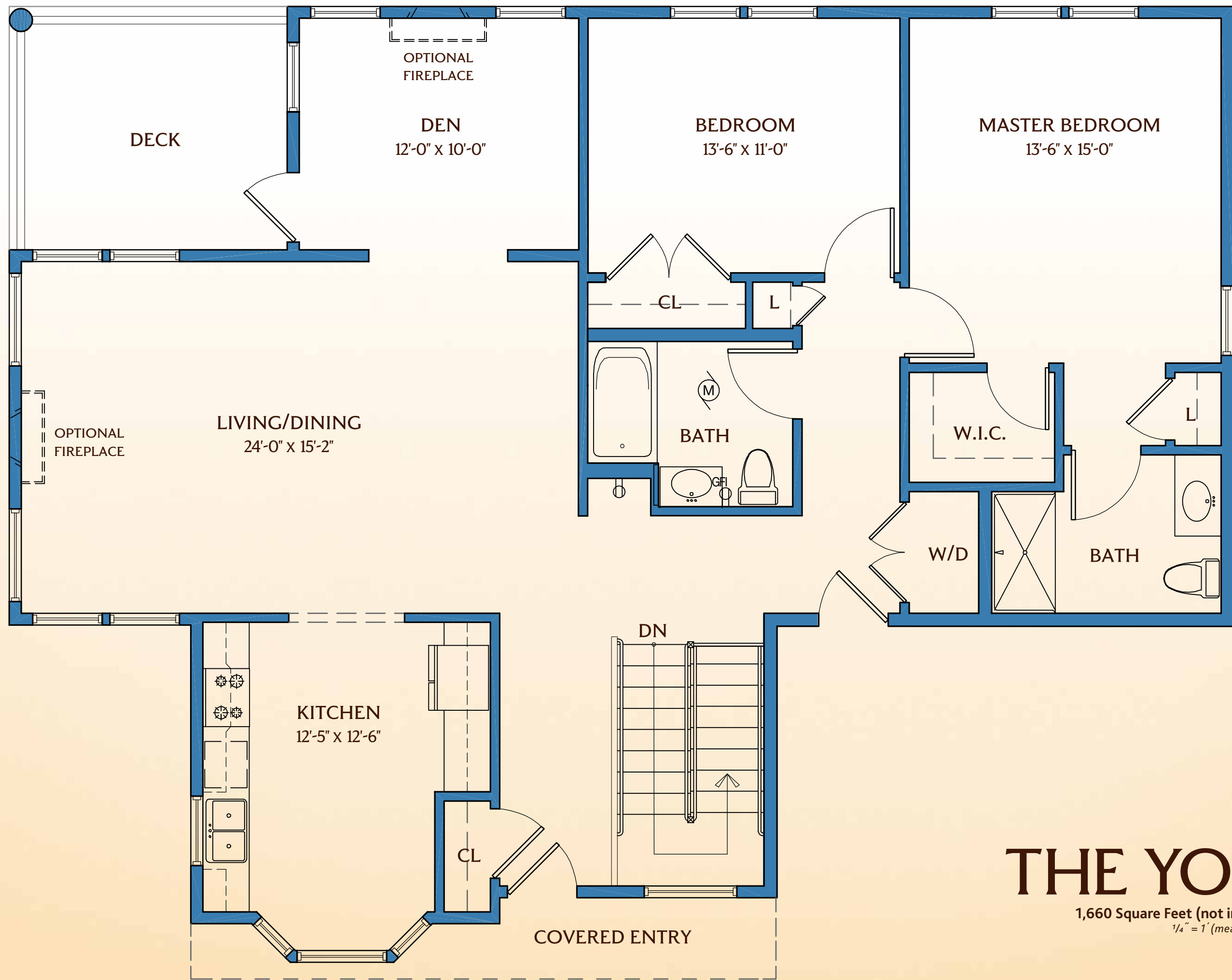


THE YORK

*Detached Two-Bedroom Patio Home
with Den, Two-Car Garage and Walkout Basement*



CLOVERWOOD
active retirement living



THE YORK

1,660 Square Feet (not including garage)
 1/4" = 1' (measurements may vary)