

# THE NOTTINGHAM

*Attached Two-Bedroom Patio Home*

## *Features:*

- Two bedrooms
- Two baths
- Spacious rooms with high ceilings
- Wall-to-wall carpeting
- Walk-in closets
- Bright, eat-in kitchen with bay window
- Full-size oven and range
- Frost-free refrigerator/ice maker
- Garbage disposal
- Microwave
- Dishwasher
- Washer and dryer
- Individually controlled heating and air conditioning
- 24-hour personal emergency response system and security services
- Pre-wired for telephone, cable television and personal computer
- Attached one- or two-car garage
- Covered entry
- Backyard patio
- Storage area

ONE SINCLAIR DRIVE • PITTSFORD, NY 14534 P 585-248-1100 [cloverwood.org](http://cloverwood.org)  
A FRIENDLY SENIOR LIVING COMMUNITY

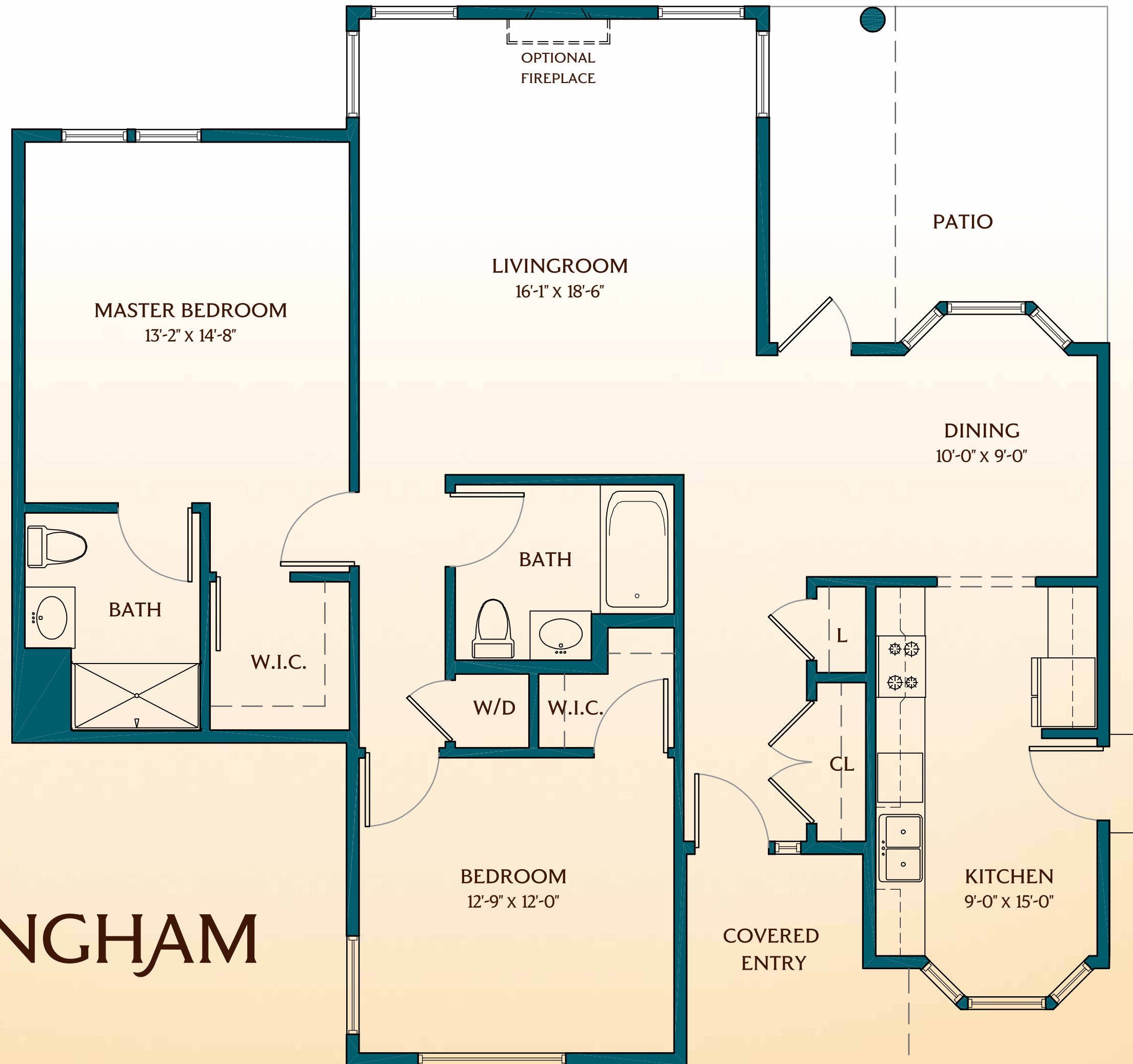


# THE NOTTINGHAM

*Attached Two-Bedroom Patio Home*



**CLOVERWOOD**  
*active retirement living*



# THE NOTTINGHAM

1,440 Square Feet (not including garage)

1/4" = 1' (measurements may vary)